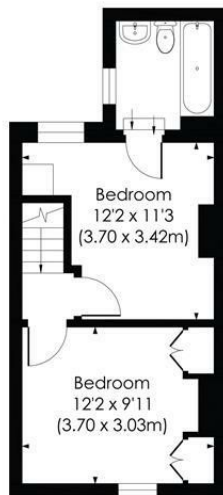
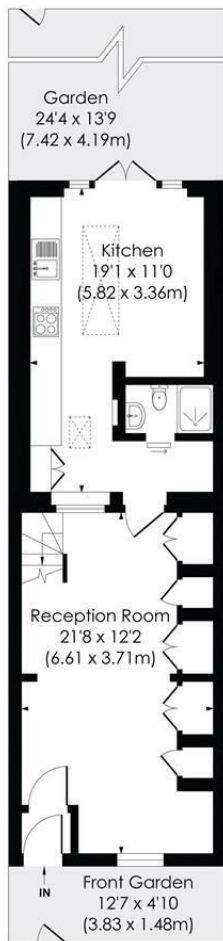


Stanley Road Morden, SM4 5DE

Offers In Excess Of £545,000 Freehold



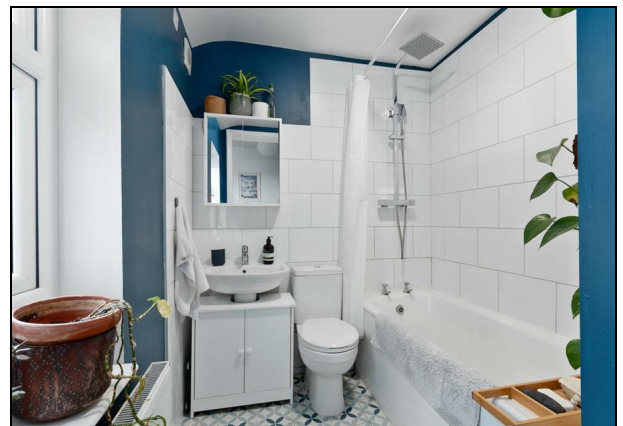
A well-presented two-bedroom Victorian mid-terrace home, ideally located on a popular residential road in Morden. The property opens into a spacious reception room, which leads through to a ground floor shower room. To the rear, a side-return extension creates a bright and airy space housing a newly fitted bespoke kitchen, offering ample storage and worktop space, with direct access to a low-maintenance rear garden. Upstairs, the property comprises two well-proportioned double bedrooms. One of the bedrooms benefits from access to a modern, newly fitted bathroom, finished with tasteful, stylish tiling. This home is ideal for buyers seeking a turnkey Victorian property with contemporary finishes and a practical layout.



STANLEY ROAD, SM4

Approx. Gross Internal Floor Area

800 Sq. ft/74.28 Sq. m

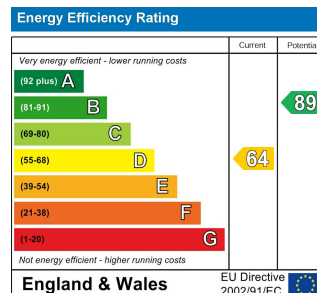


pixangle
PROPERTY MARKETING

This floor plan has been prepared for the purpose of illustration only in accordance with the latestRICS code of measuring practice and is not to scale. All measurements and areas are approximate and whilst every effort has been made to ensure the accuracy of the plan contained here, no responsibility is taken for any error, omission or misstatement.

© Pixangle Property Marketing Ltd. info@pixangle.com Tel: 0208 870 2118

- Two Bedroom Terraced Victorian Cottage
- Two Modern Bathrooms
- Excellent Location Minutes from Morden Underground Station (Northern Line)
- Low-Maintenance Private Rear Garden
- Turnkey Condition Throughout
- Extended Newly Fitted Bespoke Kitchen
- On-Road Permit Parking
- Freehold
- EPC Rating : D
- Merton Council Tax Band : C



For Free Mortgage Quote and Best Mortgage Rates, call Ellisons Mortgage Advisor on 0208 543 1166



Although these particulars are believed to be correct, their accuracy is not guaranteed and they do not form part of any contract.

Celebrating 30 years of successful Sales and Lettings in Merton

